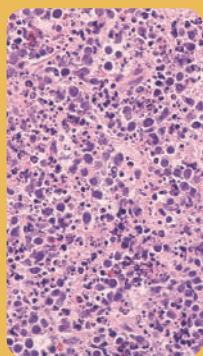


# INTRODUCING Whole Slide Imaging

UNIQUELY ENABLING MULTIMODAL  
VIEWS OF PATIENTS' CANCERS



## Whole Slide Images + Market-Leading ClinicoGenomic AVATAR Dataset

- Providing the most expansive view of a patient's cancer
- Linked Whole Exome, Whole Transcriptome and Germline sequencing
- Observational clinical data across the entirety of each patient's cancer care

## Linked Data Modalities That Illuminate Oncology Discovery

Most Comprehensive Oncology  
Observational Data Solution

Facilitate insights into patients individual cancers and unlock computational, spatial, relational and progressive views of tumor composition.

